

Community Accessibility

What it should be, What it is and What to do

Prepared for Creating Pathways to Independence
11 October 2017
Jerry Christiansen, Freedom Resource Center



Who is this guy?

Jerry Christiansen
Freedom Resource Center
Accessibility Specialist
CAPS



Topics

- Parking
- Get to building
- Get into building
- Use building



Accessible parking mirror hanger



Accessible parking mirror hanger



Accessible parking space



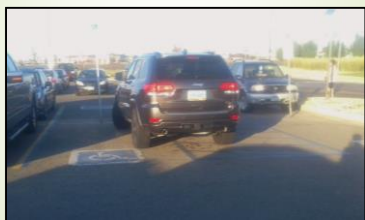
Accessible parking space ??



Legal in MN and ND



Park in space, not Access Aisle



Accessible Route



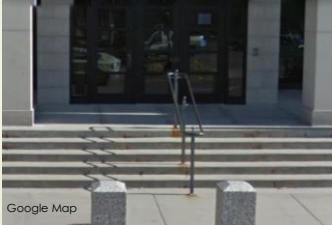
How is this route?



Protruding Objects



Quentin Burdick Federal Building



Quentin Burdick Federal Building zoomed out



Getting in the building



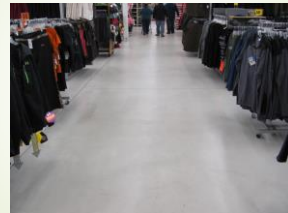
Accessible door?



Now What?



Circulation path in store



Side aisles



What to do?

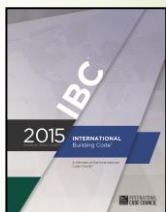
Know what is required

Advocate

File complaint



Know what is required



Advocate

Talk with 'store'
Management vs Clerk

Legal Department

Freedom may be able to assist



File a Complaint

Private – hire attorney



File a Complaint, continued

“Report to ADA “

ND DOJ

Fargo

701-297-7400

Bismarck

701-530-2420

MN DOJ

Mpls

602-664-5600

St. Paul

651-848-1950



ND DOJ
<https://www.justice.gov/usao-nd>



MN DOJ
<https://www.justice.gov/usao-mn>



File a Complaint, continued

MN
 Department of Human Rights
 St. Paul St. Cloud branch
 800-657-3704 320-407-8288



MN Dept of Human Rights
<https://mn.gov/mdhr/#header>



File a Complaint, continued

ND
 Department of Labor and Human Rights
 Bismarck
 800-582-8032 in state



ND Dept Labor & Human Rights
<http://www.nd.gov/labor/>



Freedom's Fit?

Information
Advocacy
Survey
Accessible Business Finder




Accessible Business Finder

<https://www.freedomrc.org/>

BUSINESS ACCESSIBILITY GUIDE

Our Civil and Human Rights Task Force is very active in surveying businesses to learn how well they meet the standards required by the Americans with Disabilities Act (ADA). Survey results are reported in four areas: Approach, Entry, Accommodations and Restrooms as described below.

Approach

- Number and location of accessible parking
- Size of parking spaces and access aisles
- Access to door

Entry

- Width of door
- How to open door
- Threshold height
- Measuring space at door / type of hardware

Accommodations


- Width of aisle
- Accessible customer seating area
- Accessible tables
- Severely obese - 600 measuring space

Restrooms

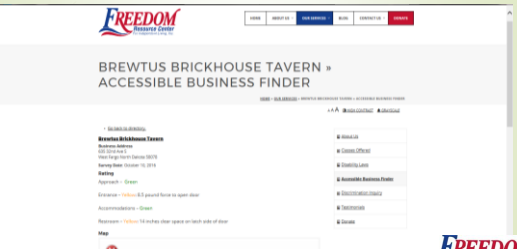
- Entrance - how to open, measuring space
- Accessible toilet - grab bars, space dimensions
- Turning and approach space at fixtures
- Accessible sink

Each area is rated Green, Yellow or Red. A Green rating means that all features surveyed for that area meet the ADA Standards. A Yellow rating means that one item listed above does not meet the ADA Standards. A Red rating means that two or more items do not meet the ADA Standards. A brief explanation describing deficient features follows below and red ratings. When Yellow or Red ratings are given, each individual will need to determine if they can access the business.

City: State:



Accessible Business Finder Sample



BREWSTUS BRICKHOUSE TAVERN + ACCESSIBLE BUSINESS FINDER


1000 S. 100th Ave., Suite 100, Aurora, CO 80016
 303.733.1111
 1000 S. 100th Ave., Suite 100, Aurora, CO 80016
 10/10/2016 10:10:10 AM

Rating

- Approach - Green
- Entry - Yellow: 0.5 yard from to open door
- Accommodations - Green
- Restrooms - Yellow: 10 inches clear space on both sides of door

Map

This content cannot be displayed in a frame.



<https://enablemob.wustl.edu/DBTAC/WebSurveyStudy/CHEC.html>

WUSTL (U.S.)
University of St. Louis
Division of Health Services
Program in Community Health

Community Participation and Receptivity

Community Participation & Receptivity Home | CORE | PARTSIG | SPARC | FABSM | CHEC | Publications & Presentations | About Us


Our Surveys: HOME

- Characteristics of Respondents Survey (CORE)
- Participation Survey/General (PARTSIG)

Community Based Outcome Measures

COMMUNITY HEALTH ENVIRONMENT CHECKLIST

The Community Health Environment Checklist (CHEC) is an objective assessment of physical environmental features and asks the basic question: "Can a person with a disability get to, do what they need to do, and get out without much difficulty?" The survey includes a glossary of terms and a rule book with pictures to demonstrate how measurements are taken.



CHEC – Community Health Environment Checklist

<http://checpoints.com/index1.php>




Results:

Map Scale: 1:100,000
 Results: 100% (100 of 100) (100%)



Q's & C's

Thank You



Contact information

Jerry Christiansen

701-478-0459

800-450-0459

JerryC@freedomrc.org

